

	VICKERY COAL MINE	Document Owner:	VCM
		Issue:	1.1
		Last Revision Date:	August 2021
		Date Printed:	20 September 2021
WHC PLN VCM HISTORIC HERITAGE MANAGEMENT PLAN			

WHC_PLN_VCM_HISTORIC HERITAGE MANAGEMENT PLAN

	VICKERY COAL MINE	Document Owner:	VCM
		Issue:	1.1
		Last Revision Date:	August 2021
		Date Printed:	20 September 2021
WHC PLN VCM HISTORIC HERITAGE MANAGEMENT PLAN			

Contents

1	INTRODUCTION.....	1
1.1	Purpose and Scope	1
	VCM Development Consent (SSD-7480)	2
1.2	Consultation	6
1.3	Structure of the Historic Heritage Management Plan	6
2	STATUTORY REQUIREMENTS AND POLICIES	10
2.1	Development Consent SSD-7480.....	10
	2.1.1 General Management Plan Requirements as per SSD-7480	10
2.2	NSW Heritage Act, 1977	10
2.3	Licenses, Permits and Leases	10
2.4	Other Legislation	11
3	HISTORIC HERITAGE SITES AND VALUES	12
3.1	Historic Heritage Sites	12
3.2	Historic Heritage Values	12
3.3	Kurrumbede Complex	15
4	PERFORMANCE MEASURES	16
5	MANAGEMENT OF HISTORIC HERITAGE.....	17
5.1	Summary of Management Measures for Historic Heritage.....	17
5.2	Avoidance and In-Situ Conservation.....	18
5.3	Kurrumbede Complex	18
	5.3.1 Baseline Inspection.....	18
	5.3.2 Blast Management.....	19
	5.3.3 Maintenance	19
	5.3.4 Landscaping	19
	5.3.5 Rehabilitation	19
	5.3.6 Accessibility	19
5.4	Protocol for the Management of Previously Unrecorded Historic Archaeological Sites ...	20
5.5	Management of Historic Heritage Sites Database.....	20
6	HERITAGE INDUCTIONS AND TRAINING.....	21
7	CONTINGENCY PLAN	22
7.1	Adaptive Management	22

	VICKERY COAL MINE	Document Owner:	VCM
		Issue:	1.1
		Last Revision Date:	August 2021
		Date Printed:	20 September 2021
WHC PLN VCM HISTORIC HERITAGE MANAGEMENT PLAN			

8	REVIEW AND IMPROVEMENT OF ENVIRONMENTAL PERFORMANCE	24
8.1	Annual Review	24
8.2	Historic Heritage Management Plan Revision	24
8.3	Independent Environmental Audit.....	24
9	REPORTING PROCEDURES	25
9.1	Incident Reporting	25
9.2	Complaints	26
9.3	Non-Compliance with Statutory Requirements.....	26
10	REFERENCES.....	28

Appendices


Appendix A	Historic Heritage Related Conditions Development Consent SSD-7480
Appendix B	Consultation Log

Figures

Figure 1-1	Regional Location
Figure 1-2	General Arrangement – VCM Mining Area
Figure 1-3	Indicative Rail Spur Alignment
Figure 1-4	Construction and initial mining Activities General Arrangement
Figure 3-1	Known and Potential Historic Heritage Sites

Tables

Table 1	Specific Historic Heritage Management Conditions
Table 2	General Management Plan Requirements
Table 3	Historic Heritage Sites within the VCM Area and Surrounds
Table 4	Site Specific Historic Heritage Management Actions

	VICKERY COAL MINE	Document Owner:	VCM
		Issue:	1.1
		Last Revision Date:	August 2021
		Date Printed:	20 September 2021
WHC PLN VCM HISTORIC HERITAGE MANAGEMENT PLAN			

1 INTRODUCTION

The Vickery Coal Mine (VCM) is located in the Gunnedah Coal Basin, approximately 25 kilometres (km) north of Gunnedah in New South Wales (NSW) (Figure 1-1). The VCM is operated by Vickery Coal Pty Limited (VCPL) (a wholly owned subsidiary of Whitehaven Coal Limited [WHC]).


Development Consent (SSD-7480) was granted to VCPL on 12 August 2020 by the NSW Independent Planning Commission as a delegate of the NSW Minister for Planning under Section 75J of the NSW *Environmental Planning and Assessment Act, 1979* (EP&A Act). SSD-7480 allows for the development of an open cut mine and associated infrastructure with a 25 year mine life, extracting run-of-mine (ROM) coal at up to 10 million tonnes per annum (Mtpa) and processing the coal, as well as coal from WHC's Tarrawonga Mine, at an on-site coal handling and processing plant (CHPP) for off-site transport by rail.

1.1 PURPOSE AND SCOPE

This Historic Heritage Management Plan (HHMP) has been prepared by WHC (with input from an experienced and qualified heritage specialist [Extent Heritage Advisors as per the HHMP requirements of Conditions B73 and B27(b), Schedule 2 of SSD-7480 shown in Table 1.

Table 1 – Specific Historic Heritage Management Conditions in SSD-7480

VCM Development Consent (SSD-7480) Schedule 2		Relevant HHMP Section
B73. The Applicant must prepare a Historic Heritage Management Plan for the development, in respect of all non-Aboriginal cultural heritage items, to the satisfaction of the Planning Secretary. This plan must:		This HHMP
(a)	be prepared by a suitably qualified and experienced person/s;	Section 1.1
(b)	be prepared in consultation with the Heritage Branch, GSC and the Dorothea Mackellar Memorial Society and in accordance with the relevant Heritage Branch guidelines;	Section 1.2
(c)	describe how historic heritage values of the site would be recorded and preserved;	Section 3
(d)	identify all heritage items in the vicinity of the site and include a statement of significance for each item;	Section 3.1
(e)	for the Kurrumbede Homestead Complex, describe the measures to:	Section 5.3
(i)	manage appropriate future uses, including appropriate physical intervention in the heritage structures to facilitate those uses and potential wear and tear as a result of the use;	
(ii)	maintain and enhance historic landscaping around the Kurrumbede residence (especially screen planting) and manage any new landscaping;	
(iv)	monitor the physical condition of the Kurrumbede residence and outbuildings in response to dust and vibrations impacts due to the development;	
(v)	ensure that the Kurrumbede residence and outbuildings are made safe and weatherproof to prevent deteriorating beyond normal wear and tear;	
(v)	ensure that an appropriate use of the Kurrumbede Homestead Complex (including the residence) is maintained throughout the life of the development, including consideration of its use or cultural events and facilitation controlled public access;	
(vii)	minimise disturbance to the naturally occurring vegetation on the flood plain to the north of the Kurrumbede Homestead Complex, including the existing mature eucalyptus trees and historic screen plantings; and	


	VICKERY COAL MINE	Document Owner:	VCM
		Issue:	1.1
		Last Revision Date:	August 2021
		Date Printed:	20 September 2021
WHC PLN VCM HISTORIC HERITAGE MANAGEMENT PLAN			

VCM Development Consent (SSD-7480) Schedule 2		Relevant HHMP Section
(viii)	ensure the end-of-mine remediation measures include a consideration for the Kurrumbede Homestead Complex to return to an open rural setting, including revegetation of waste rock emplacements and dam bunds.	
(f)	describe the measures to be implemented on the site or within any offset areas to:	-
(i)	ensure all workers on the site receive suitable heritage inductions prior to carrying out any activities which may cause impacts to historic heritage, and that suitable records are kept of these inductions;	Sections 5 and 6
(ii)	protect heritage items located outside the approved disturbance area from impacts of the development, beyond those predicted in the document/s listed in condition A2(c);	Sections 3.1 and 4
(iii)	undertake photographic/archival recording of the Weatherboard Home (Site 22), prior to disturbance; and	Section 5.1
(iv)	manage any new heritage items discovered during the life of the development;	Section 5.4
B27.	The Applicant must:	Section 5.3.2 and the VCM Blast Management Plan
...		
(b)	ensure that blasting on the site does not damage heritage items, including Aboriginal grinding groove site 20-04-0009 and the Kurrumbede Homestead and outbuildings, except in accordance with the prediction in the document/s listed in condition A2(c), and develop specific measures to protect heritage items outside the approved disturbance areas from any blasting damage associated with the development;	
B72.	Prior to commencing blasting operations on the site, the Applicant must commission a suitably qualified structural engineer to inspect the condition of the main residence at the Kurrumbede Homestead Complex and outbuildings to confirm measures to minimise damage due to blasting, advise appropriate blasting criteria and recommend works to protect the structural integrity of the homestead.	Section 5.3.1 and 5.3.2


This HHMP has been prepared in accordance with the standard requirement for management plans listed in Condition E4, Schedule 2 of SSD-7480. Table 2 presents these requirements and indicates where each is addressed within this HHMP.

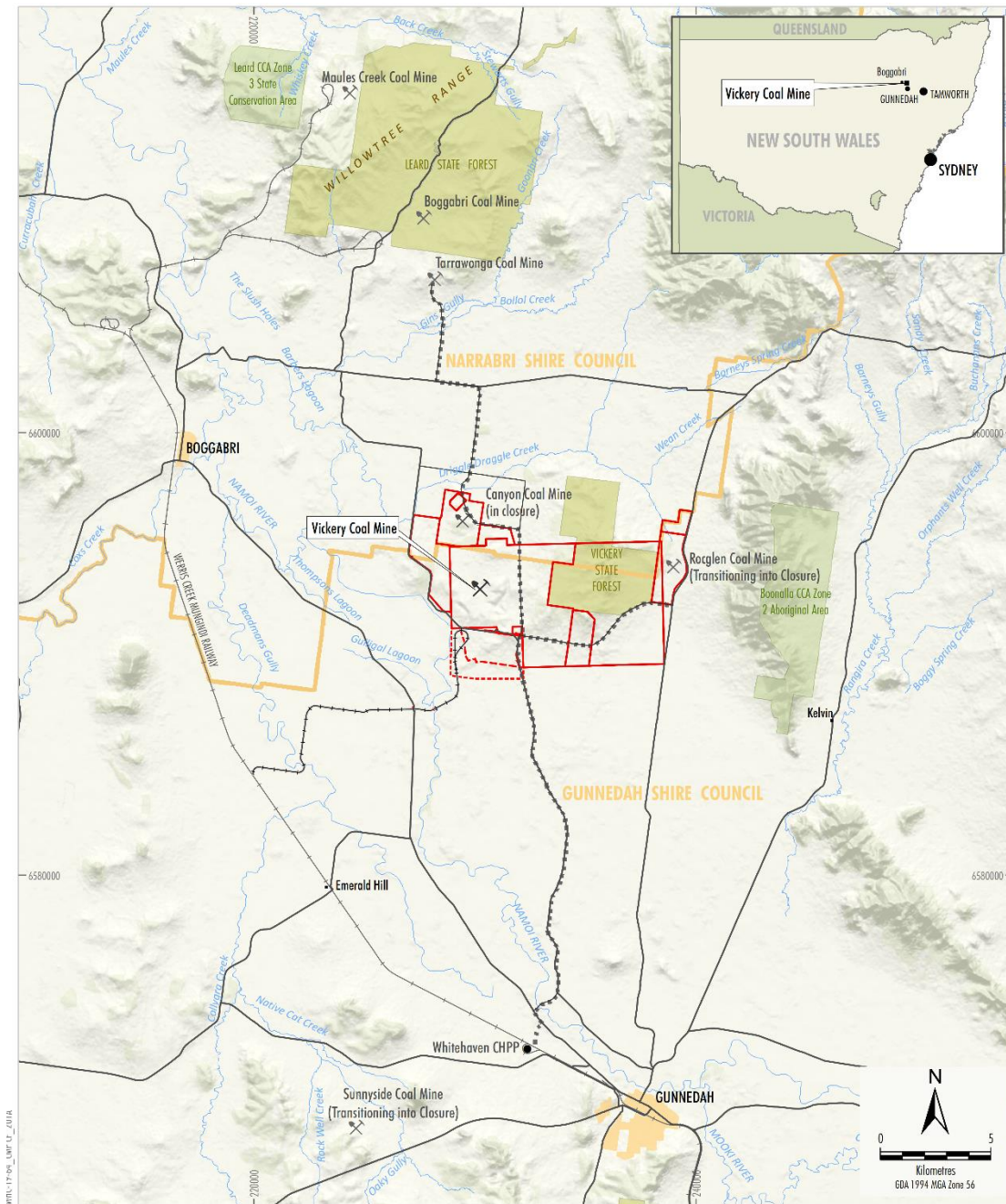
Table 2 – General Management Plan Requirements

Condition E4 Schedule 2 VCM Development Consent (SSD-7480)		Relevant HHMP Section
Management Plan Requirements		-
E4.	Management plans required under this consent must be prepared in accordance with relevant guidelines, and include where relevant:	-
(a)	summary of relevant background or baseline data;	
(b)	details of:	-
(i)	the relevant statutory requirements (including any relevant approval, licence or lease conditions);	Section 2
(ii)	any relevant limits or performance measures and criteria; and	Section 4
(iii)	the specific performance indicators that are proposed to be used to judge the performance of, or guide the implementation of, the development or any management measures;	Section 4
(c)	any relevant commitments or recommendations identified in the document/s listed in condition A2(c);	Sections 4 and 5
(d)	a description of the measures to be implemented to comply with the relevant statutory requirements, limits, or performance measures and criteria;	Section 5
(e)	a program to monitor and report on the:	-
(i)	impacts and environmental performance of the development; and	Sections 5.2 and 5.3.2

	VICKERY COAL MINE	Document Owner:	VCM
		Issue:	1.1
		Last Revision Date:	August 2021
		Date Printed:	20 September 2021
WHC PLN VCM HISTORIC HERITAGE MANAGEMENT PLAN			

Condition E4 Schedule 2 VCM Development Consent (SSD-7480)		Relevant HHMP Section
(ii)	<i>effectiveness of the management measures set out pursuant to paragraph (d);</i>	Section 4
(f)	<i>a contingency plan to manage any unpredicted impacts and their consequences and to ensure that ongoing impacts reduce to levels below relevant impact assessment criteria as quickly as possible;</i>	Section 7
(g)	<i>a program to investigate and implement ways to improve the environmental performance of the development over time;</i>	Section 8
(h)	<i>a protocol for managing and reporting any:</i>	-
(i)	<i>incident, non-compliance or exceedance of any impact assessment criterion or performance measure;</i>	Section 9.1
(ii)	<i>complaint; or</i>	Section 9.2
(iii)	<i>failure to comply with other statutory requirements;</i>	Section 9.3
(i)	<i>public sources of information and data to assist stakeholders in understanding environmental impacts of the development; and</i>	Section 8
(j)	<i>a protocol for periodic review of the plan.</i>	Section 8.2

	VICKERY COAL MINE	Document Owner:	VCM
		Issue:	1.1
		Last Revision Date:	August 2021
		Date Printed:	20 September 2021
WHC PLN VCM HISTORIC HERITAGE MANAGEMENT PLAN			




- LEGEND**
- Mining Tenement Boundary (MLCL and AUTH)
 - Exploration Licence Boundary (EL)
 - Mining Lease Application (MLA)
 - Local Government Boundary
 - State Forest
 - State Conservation Area, Aboriginal Area
 - Major Roads
 - Railway
 - Approved Road Transport Route
 - Indicative Project Rail Spur

Source: LPMA - Topographic Base (2010); NSW Department of Industry (2015)


VICKERY COAL MINE
 Project Location

Figure 1-1

Figure 1-1 Regional Location

	VICKERY COAL MINE	Document Owner:	VCM
		Issue:	1.1
		Last Revision Date:	August 2021
		Date Printed:	20 September 2021
WHC PLN VCM HISTORIC HERITAGE MANAGEMENT PLAN			


On 11 December 2020, the Secretary of the Department of Planning, Industry and Environment (DPIE) approved the progressive submission of environmental management plans for the VCM in accordance with Condition A25(a), Schedule 2 of SSD-7480. The scope of this HHMP is specifically related to the VCM construction and initial mining activities.

The construction and initial mining stage is anticipated to take approximately 30 months based on sequencing of the major construction activities, with the bulk of significant construction earthworks to occur within a 12 - 18 month period, and will include:

- construction of the CHPP;
- construction of the rail spur and loop and train load-out facility;
- construction of the mine industrial area (MIA);
- construction of ROM and product coal stockpile pads;
- initial development of the box cut;
- construction of temporary infrastructure facilities;
- construction of temporary ROM coal stockpile pads;
- construction of workshops and offices;
- construction of water supply bores and Namoi River pump station and pipelines;
- construction of dams, sediment dams, up-catchment diversions, channels and other water management infrastructure;
- construction of soil stockpile areas;
- construction of access roads and internal roads;
- closure of a portion of Braymont Road;
- construction of connection to the existing 66 kilovolt (kV) powerline and construction of substations and power supply;
- construction of ancillary infrastructure including consumable storage areas, laydown areas, explosives storage facilities;
- ongoing exploration activities; and
- other associated minor infrastructure construction, use of other plant and other activities.

The general arrangement of the VCM is shown on Figures 1-2 and 1-3. The VCM layout at the end of the construction and initial mining stage is shown on Figure 1-4.

Earthworks associated with the development of the above infrastructure would include the excavation of waste rock, gravel and coal material from within the VCM open cut footprint. The earthworks would include the initial development of the box cut, with a small volume of ROM coal extracted for stockpile pad treatment, commissioning activities and transport to the Gunnedah CHPP. Additionally, a small volume of coal from WHC's other mines may be delivered to the VCM for stockpile pad treatment and CHPP commissioning activities.

	VICKERY COAL MINE	Document Owner:	VCM
		Issue:	1.1
		Last Revision Date:	August 2021
		Date Printed:	20 September 2021
WHC PLN VCM HISTORIC HERITAGE MANAGEMENT PLAN			

1.2 **CONSULTATION**

In accordance with Condition B73(b), Schedule 2 of SSD-7480, this HHMP has been prepared in consultation with Heritage NSW, Gunnedah Shire Council and the Dorothea Mackellar Memorial Society.

1.3 **STRUCTURE OF THE HISTORIC HERITAGE MANAGEMENT PLAN**

The remainder of this HHMP is structured as follows:

- Section 2 Outlines the relevant statutory requirements and policies relevant to this HHMP.
- Section 3 Describes the historic heritage sites and values at the VCM.
- Section 4 Describes the performance measures for historic heritage at the VCM.
- Section 5 Describes the performance measures applicable to historic heritage management at the VCM.
- Section 6 Describes the protocols for heritage inductions and training at the VCM.
- Section 7 Provides a contingency plan to manage unprecedented impacts and their consequences.
- Section 8 Provides details for the review and improvement of environmental performance.
- Section 9 Describes the procedures in place for management and reporting of incidents, complaints and non-compliance's with statutory requirements.
- Section 10 Provides references cited in this HHMP.



VICKERY COAL MINE

Document Owner:	VCM
Issue:	1.1
Last Revision Date:	August 2021
Date Printed:	20 September 2021

WHC PLN VCM HISTORIC HERITAGE MANAGEMENT PLAN

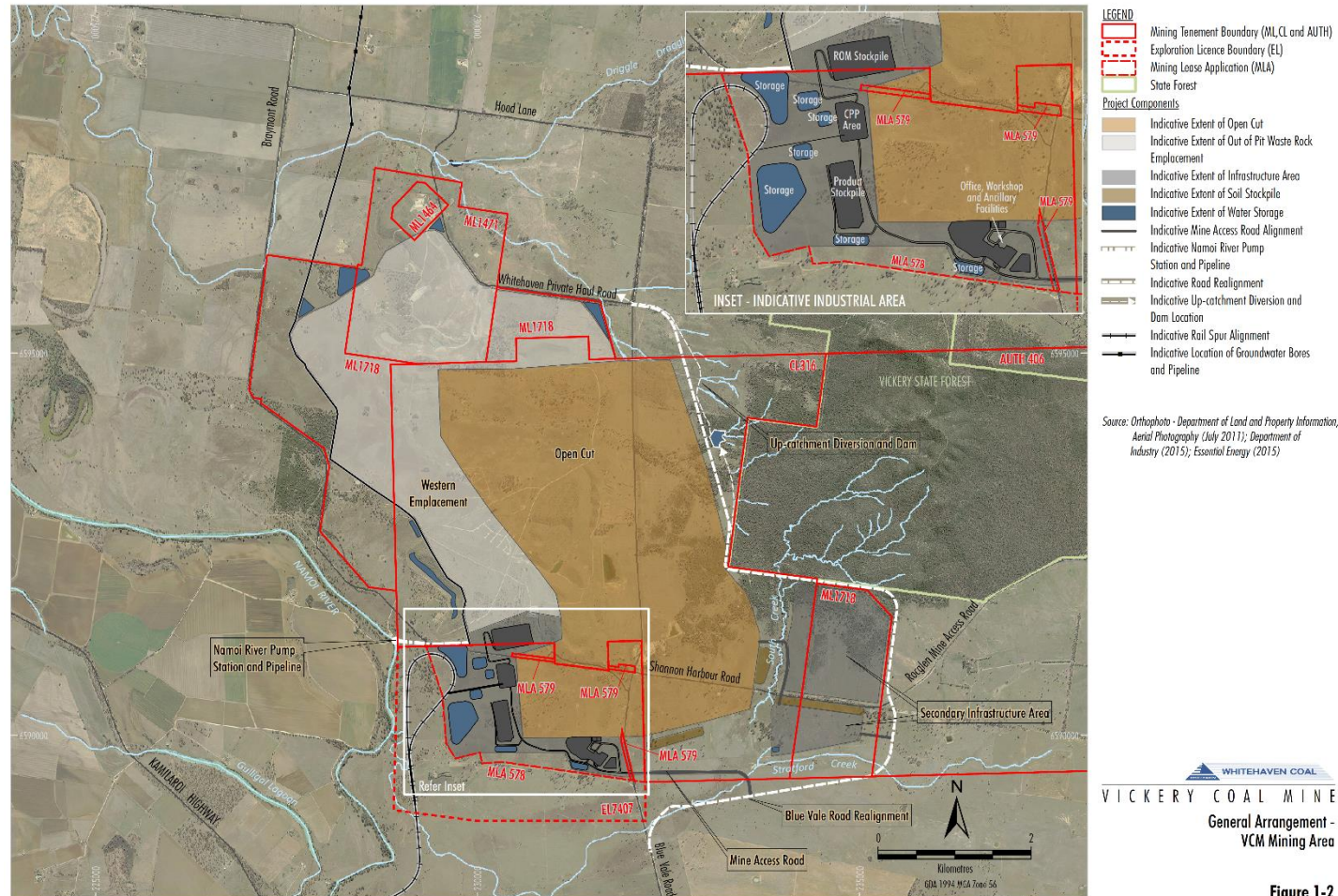


Figure 1-2

Figure 1-2 VCM Mining Area General Arrangement



VICKERY COAL MINE

Document Owner:	VCM
Issue:	1.1
Last Revision Date:	August 2021
Date Printed:	20 September 2021

WHC PLN VCM HISTORIC HERITAGE MANAGEMENT PLAN

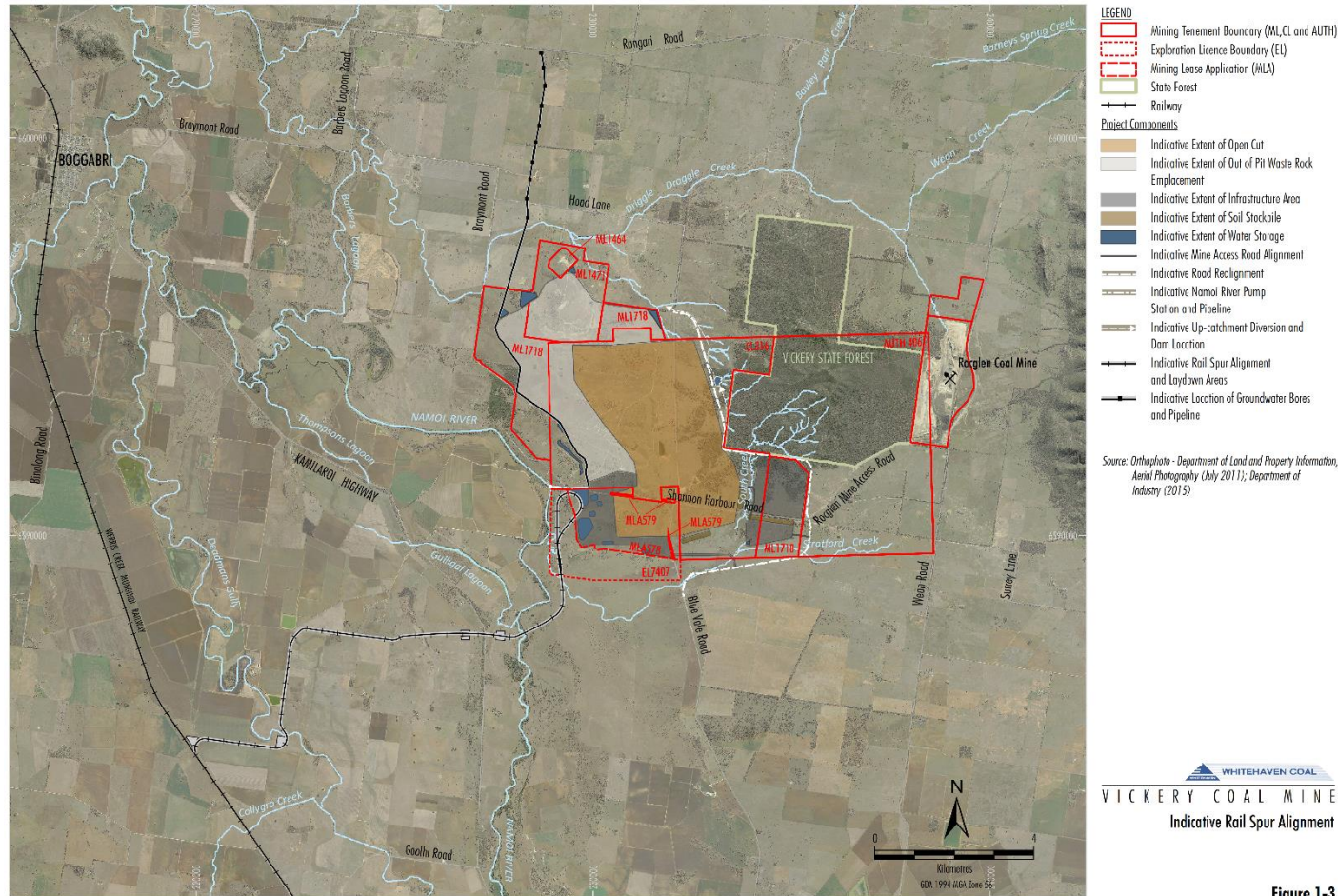


Figure 1-3

Figure 1-3 Indicative Rail Spur Alignment



VICKERY COAL MINE

Document Owner:	VCM
Issue:	1.1
Last Revision Date:	August 2021
Date Printed:	20 September 2021

WHC PLN VCM HISTORIC HERITAGE MANAGEMENT PLAN

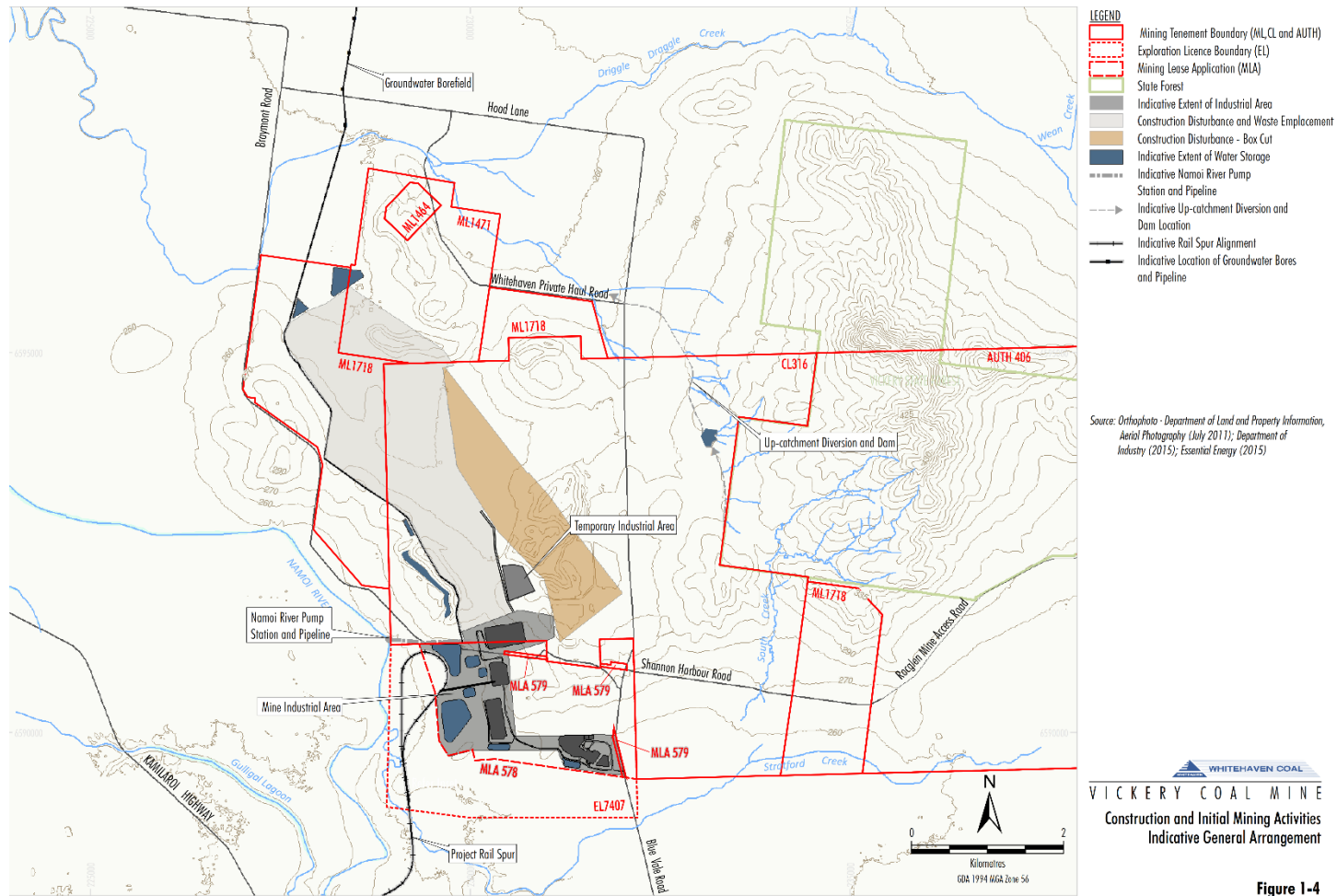



Figure 1-4

Figure 1-4 Construction and initial mining Activities General Arrangement

	VICKERY COAL MINE	Document Owner:	VCM
		Issue:	1.1
		Last Revision Date:	August 2021
		Date Printed:	20 September 2021
WHC PLN VCM HISTORIC HERITAGE MANAGEMENT PLAN			

2 STATUTORY REQUIREMENTS AND POLICIES

WHC's statutory obligations relevant to historic heritage management are contained in:

- the conditions of Development Consent SSD-7480;
- the NSW *Heritage Act, 1977*;
- the relevant licences and permits, including conditions attached to mining leases; and
- other relevant legislation.

Obligations relevant to this HHMP are described below.

2.1 DEVELOPMENT CONSENT SSD-7480

The conditions of SSD-7480 relevant to the content and structure of this HHMP are described below. A comprehensive list of all conditions in SSD-7480 relevant to historic heritage is provided in Appendix A.

2.1.1 **General Management Plan Requirements as per SSD-7480**

This HHMP has been prepared in accordance with the standard requirement for management plans listed in Condition E4, Schedule 2 of SSD-7480 (refer to Table 2). As per Condition B74, Schedule 3 of SSD-7480, the Applicant must not commence construction until this HHMP is approved by the Planning Secretary and the Applicant must implement the Historic Heritage Management Plan as approved by the Planning Secretary (Condition B 75).

2.2 NSW HERITAGE ACT, 1977

The NSW *Heritage Act, 1977* is used to regulate development impacts on the State's historical heritage assets. The NSW *Heritage Act, 1977* defines a heritage item as:

"a place, building, work, relic, moveable object or precinct"

To assist with the management of the State's heritage assets, the NSW *Heritage Act, 1977* distinguishes between items of local and State heritage significance. Items that are assessed as having State heritage significance can be listed on the NSW State Heritage Register (SHR). No items on the site are identified on the register.

2.3 LICENSES, PERMITS AND LEASES

In addition to SSD-7480, activities associated with the VCM will be undertaken in accordance with the following licences, permits and leases:


- Coal Lease (CL) 316, Mining Leases (MLs) 1718, 1471, 1464 and MLA 578.
- The VCM Construction Mining Operations Plan.
- Mining and workplace health and safety related approvals.

	VICKERY COAL MINE	Document Owner:	VCM
		Issue:	1.1
		Last Revision Date:	August 2021
		Date Printed:	20 September 2021
WHC PLN VCM HISTORIC HERITAGE MANAGEMENT PLAN			

2.4 **OTHER LEGISLATION**

In addition to the statutory obligations described above, the following NSW Acts (and their regulations) may be applicable to the conduct of the VCM:

- *Heritage Act, 1977;*
- *National Parks and Wildlife Act, 1974;*
- *Gunnedah Local Environmental Plan 2012; and*
- *Narrabri Local Environmental Plan 2012.*

	VICKERY COAL MINE	Document Owner:	VCM
		Issue:	1.1
		Last Revision Date:	August 2021
		Date Printed:	20 September 2021
WHC PLN VCM HISTORIC HERITAGE MANAGEMENT PLAN			

3 HISTORIC HERITAGE SITES AND VALUES

WHC has established and maintains a Historic Heritage Sites Database for VCM. The database is based on previous historic heritage surveys and assessments undertaken at the VCM and surrounds. Historic heritage sites within the VCM area and surrounds have been identified through a range of previous studies, including (but not limited to):

- *Vickery Coal Project Non-Aboriginal Heritage Assessment* (Heritage Management Consultants Pty Ltd, 2012); and
- *Vickery Extension Project Historic Heritage Assessment* (Extent, 2018).

3.1 HISTORIC HERITAGE SITES

The previous historic heritage assessments undertaken within the VCM area and surrounds identified a number of historic heritage sites.

Table 3 lists the *in situ* known historic heritage sites identified within the vicinity of the VCM. The historic heritage sites at the VCM are presented on Figure 3-1. Note none of the historic heritage sites are identified in the Government heritage register. A detailed description of the management measures for each site described in Table 3 is provided in Section 4.

Table 3 – Historic Heritage Sites within the VCM Area

Site Number	Site Name	Located within VCM Boundary	Description	Significance
1	Kurrumbede Homestead Complex	No	Suite of farm buildings dated from 1907/1908 including a main residence and surrounding structures.	Local / Potential State
2	Timber Racing Barriers	Yes - within rail loop	Remains of timber racing barriers set within an open area cleared of trees.	Nil
3	Weatherboard Home	Yes – within VCM mining area	A weatherboard home with board-and-batten exterior cladding and a wrap-around veranda on the front and side elevations.	Local
4	Horse Drawn Scoop and other items	No	Various identified items within the VCM footprint (Heritage Management Consultants Pty Ltd, 2012).	Nil

Source: Extent (2018), Heritage Management Consultants Pty Ltd (2012).

* Site 4 refers to various items identified across the mining area and as such is not shown on Figure 3-1.

3.2 HISTORIC HERITAGE VALUES

In assessing the levels of significance for the places noted in Table 3, Extent (2018) applied the heritage assessment criteria contained within the document *Assessing Heritage Significance* (NSW Heritage Office, 2001).



VICKERY COAL MINE

Document Owner:	VCM
Issue:	1.1
Last Revision Date:	August 2021
Date Printed:	20 September 2021

WHC PLN VCM HISTORIC HERITAGE MANAGEMENT PLAN

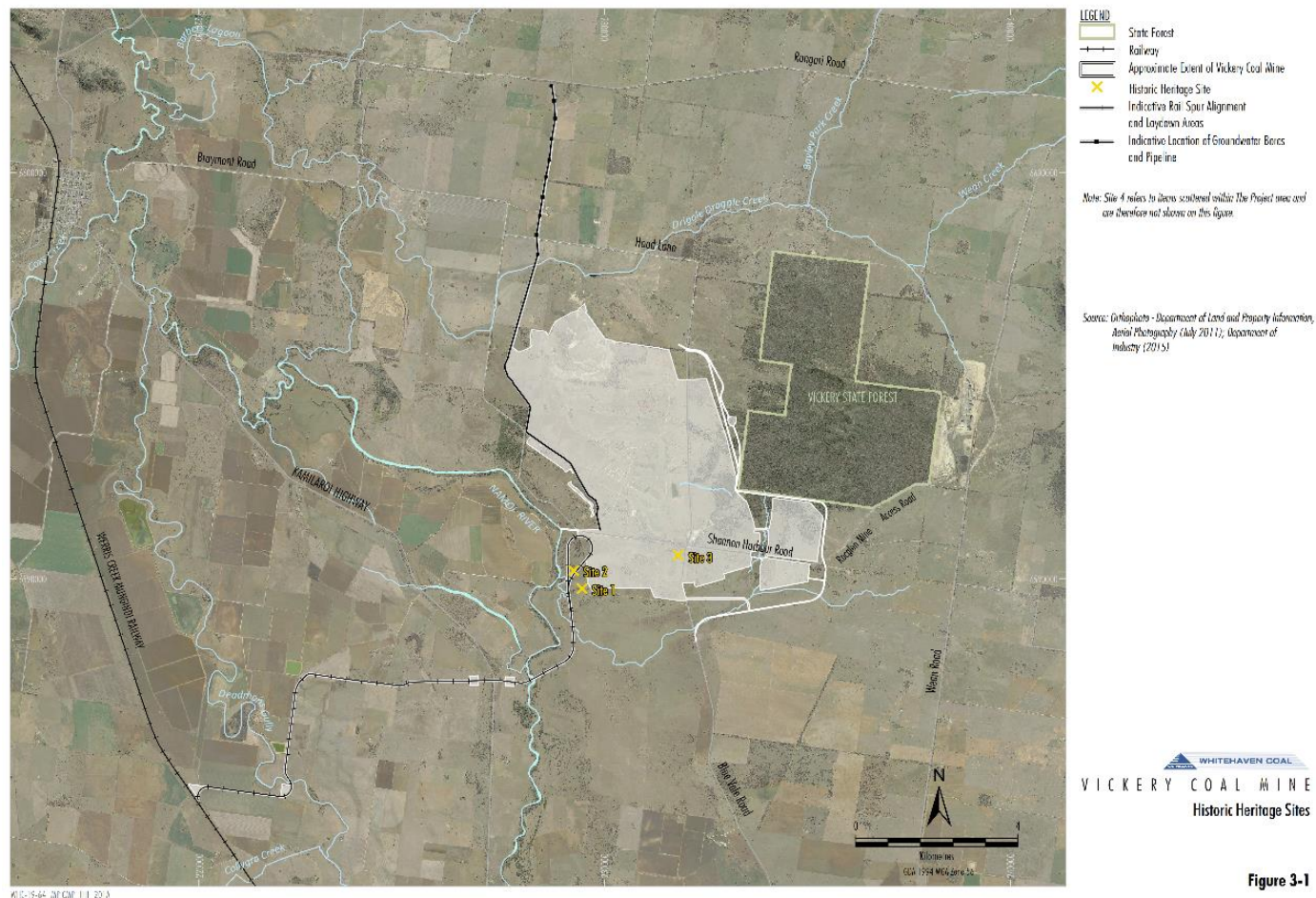



Figure 3-1 Historic Heritage Sites

	VICKERY COAL MINE	Document Owner:	VCM
		Issue:	1.1
		Last Revision Date:	August 2021
		Date Printed:	20 September 2021
WHC PLN VCM HISTORIC HERITAGE MANAGEMENT PLAN			


An item was considered to be of potential State (or local) historical heritage significance if it meets one or more of the following criteria:

- Criterion (a) An item is important in the course, or pattern, of NSW's cultural or natural history (or the cultural or natural history of the local area);
- Criterion (b) An item has strong or special association with the life or works of a person, or group of persons, of importance in NSW's cultural or natural history (or the cultural or natural history of the local area);
- Criterion (c) An item is important in demonstrating aesthetic characteristics and/or a high degree of creative or technical achievement in NSW (or the local area);
- Criterion (d) An item has strong or special association with a particular community or cultural group in NSW (or the local area) for social, cultural or spiritual reasons;
- Criterion (e) An item has potential to yield information that will contribute to an understanding of NSW's cultural or natural history (or the cultural or natural history of the local area);
- Criterion (f) An item possesses uncommon, rare or endangered aspects of NSW's cultural or natural history (or the cultural or natural history of the local area); and
- Criterion (g) An item is important in demonstrating the principal characteristics of a class of NSW's:
 - cultural or natural environments (or a class of the local area's);
 - cultural or natural places; or
 - cultural or natural environments.

Both the sites listed in Table 3 have been assessed as being significant at the local level (as distinct from places significant at state or national level).

The Kurrumbede Homestead Complex has also been assessed as being potentially significant at the State level (Extent, 2018) for its:

- association with a person of importance to the cultural history of NSW (criterion [b]);
- aesthetic qualities (criterion [c]);
- social significance (criterion [d]); and
- rarity (criterion [f]).

	VICKERY COAL MINE	Document Owner:	VCM
		Issue:	1.1
		Last Revision Date:	August 2021
		Date Printed:	20 September 2021
WHC PLN VCM HISTORIC HERITAGE MANAGEMENT PLAN			

3.3 **KURRUMBEDE COMPLEX**

The Kurrumbede Homestead Complex is located at 1693 Blue Vale Road, Gunnedah within a large rural allotment (being Lot 21 on DP754929). The property is located east of the Namoi River on a rise above the flood plain, approximately 19 km to the north-west of Gunnedah.

The site comprises a suite of farm buildings dating from 1907-1908 to around the 1950s, including:

- The main homestead residence ('Kurrumbede');
- A subterranean 'meat locker';
- Two weatherboard cottages, both in a poor state of repair;
- A corrugated metal silo adjacent to a work shed;
- Timber stables;
- A work shed;
- Quarters for farm workers;
- A workers' cottage;
- A shearing shed; and
- Stockyards.

The main residence and outbuildings together read as a functional unit, with historical associations. There were (and continue to be) visual inter-connections between the buildings. However, the main residence has a south-facing aspect and was designed to 'turn its back' on the work areas to the rear (north). Therefore, the expansive views from the front verandah of the main residence look south (i.e. away from the Project) and views to the north are obscured to some degree at ground level by the outbuildings and existing vegetation.

Views into and out of the main residence are deliberately constrained by the established landscaping. In two locations, the eye is deliberately led down ornamental entrances: a driveway from the east of the main residence and a landscaped pathway to the west. Views outwards to the north, west and east from the outbuildings to the rear of the main residence are generally uninterrupted, capturing gently undulating grassland and eucalypts fringing the Namoi River on the north and west. The low mountains are visible on the horizon approximately 13 km to the east.

	VICKERY COAL MINE	Document Owner:	VCM
		Issue:	1.1
		Last Revision Date:	August 2021
		Date Printed:	20 September 2021
WHC PLN VCM HISTORIC HERITAGE MANAGEMENT PLAN			


4 PERFORMANCE MEASURES

Condition E4(b), Part E of SSD-7480 requires all management plans to include relevant limits or performance measures/criteria and the specific performance indicators that are proposed to be used to judge the performance of, or guide the implementation of, the VCM or any management measures.

There are no specific performance measures relating to historic heritage identified in SSD-7480. Notwithstanding the following historic heritage related performance indicators will be used to assess the performance of the VCM:

- results of blast monitoring indicate compliance with the nominated criteria for the Kurrumbede Homestead;
- minimisation of any deterioration of the physical condition of the Kurrumbede Homestead, as a result of VCM mining activities only, to be determined by a suitably qualified practitioner; and
- complaints are minimised and appropriate management actions are implemented following receipt of a complaint (Section 9.2).

Section 7 outlines the Contingency Plan to be implemented to manage any unprecedented impacts. Section 9 details the reporting that will be undertaken by WHC.

	VICKERY COAL MINE	Document Owner:	VCM
		Issue:	1.1
		Last Revision Date:	August 2021
		Date Printed:	20 September 2021
WHC PLN VCM HISTORIC HERITAGE MANAGEMENT PLAN			

5 MANAGEMENT OF HISTORIC HERITAGE

5.1 SUMMARY OF MANAGEMENT MEASURES FOR HISTORIC HERITAGE


Table 4 presents the management actions described in the approved EISs for the relevant heritage sites (WHC, 2018). These management actions were identified through the *Vickery Extension Project Historic Heritage Assessment* (Extent, 2018) that identified heritage sites at the VCM, the nature of any adverse heritage impacts, and recommended certain actions in mitigation of the identified adverse heritage impacts.

Table 4 – Site Specific Historic Heritage Management Actions

Site Number	Site Name	Significance	Management Action	HHMP Section Reference
1	Kurrumbede Homestead Complex	Local / Potential State	Avoid direct disturbance. Undertake airblast and vibration monitoring at the homestead during construction and operations. Prior to the commencement of mining, the homestead and outbuildings would be inspected by a structural engineer to inspect the condition and confirm measures to minimise damage due to blasting, advise appropriate blasting criteria and recommend work to protect the structural integrity of the Homestead.	Sections 5.3 and 5.5
2	Timber Racing Barriers	Nil	During the construction phase of the VCM, take steps to avoid damage to the timber racing barriers due to the movement of heavy machinery and other activities. This will include the erection of temporary fencing around the stalls. Seek to minimise the movement of heavy machinery across the open area that appears to have been the former racing track. If damage to the timber racing barriers becomes unavoidable it is appropriate that they be removed without the need for any recording additional to that undertaken in the preparation of this report. It would not be necessary to salvage the highly deteriorated timbers	Section 5.2
3	Weatherboard Home	Local	Photographic archival recording has been undertaken in accordance with the following NSW Government guidelines: <ul style="list-style-type: none"> How to Prepare Archival Records of Heritage Items (NSW Heritage Office, 1998); and Photographic Recording of Heritage Items Using Film or Digital Capture (NSW Heritage Office, 2006). Demolition of the Weatherboard Home will occur during the construction and initial mining phase of the VCM.	-
4	Horse Drawn Scoop	Nil	Prior to Project disturbance, these objects would be preferentially offered to the Boggabri Historical Society, Gunnedah Museum and Gunnedah Rural Museum, or divested appropriately	-

Source: after Extent (2018) and Heritage Management Consultants Pty Ltd (2012).

The Land Disturbance Permit (LDP) will be reviewed to consider historic heritage sites at VCM.

	VICKERY COAL MINE	Document Owner:	VCM
		Issue:	1.1
		Last Revision Date:	August 2021
		Date Printed:	20 September 2021
WHC PLN VCM HISTORIC HERITAGE MANAGEMENT PLAN			

5.2 **AVOIDANCE AND IN-SITU CONSERVATION**

In-situ conservation objectives generally include that the sites be:

- kept reasonably secure against vandalism and storm damage; and
- protected from accidental damage arising out of VCM activities (e.g. the movement of heavy machinery, new construction etc.). This will include measures such as fencing and the maintenance of Historic Heritage Sites Database.

The approved Vickery Extension Project (VEP) EIS recommended the avoidance and in-situ conservation of the Kurrumbede Homestead Complex (Site 1) (Table 4). Specific management measures relevant to the Kurrumbede Homestead are detailed in Section 5.3 below.

Monitoring of the Kurrumbede Homestead Complex (Site 1) is detailed in Section 5.3.

The approved VEP EIS also recommended the avoidance of the timber racing barriers (Site 2), including installation of temporary fencing and implementation of steps to avoid damage due to the movement of heavy machinery and other activities (Table 4). Notwithstanding, if damage to the timber racing barriers becomes unavoidable Extent (2018) recommended it is appropriate that they be removed without the need for any recording or salvage.

5.3 **KURRUMBEDE COMPLEX**

The Kurrumbede Homestead will not be directly impacted by the VCM however may be subject to indirect impacts, including (but not limited to) blasting, air quality, noise, visual amenity and loss of accessibility.


5.3.1 **Baseline Inspection**

Inspection of the condition of the Kurrumbede Complex has been undertaken by a suitably qualified structural engineer in accordance with Condition B72, Schedule 2 of SSD-7480. The Structural Engineer confirmed the blasting criteria specified in Condition B17 Schedule 2 of SSD 7480 is appropriate to minimise the likelihood of structural damage.

The inspection confirmed measures to minimise damage due to blasting and recommended works (eg. Repair sarking in roof) to protect the structural integrity of the Homestead and outbuildings, as well as works to ensure the structures are made safe and weatherproof. The inspection reported on, and categorised the recommended timeframes for addressing repairs to ensure the structures are made safe and weatherproof to prevent deterioration beyond normal wear and tear.

In relation to the Homestead, recommendations included fixing a leaking pump under a water tank, a broken and detached downpipe, roof sarking, painting a steel structure supporting the water tank and replacement of some steps. The nine outbuildings included recommendations varying from repair and appropriate replacement of fittings, to repairing doors,

If monitoring determines that any original or existing built elements of the Kurrumbede Homestead are failing or damaged due to VCM, these features would be repaired and/or replaced in consideration of the 'like-for-like' principle.

	VICKERY COAL MINE	Document Owner:	VCM
		Issue:	1.1
		Last Revision Date:	August 2021
		Date Printed:	20 September 2021
WHC PLN VCM HISTORIC HERITAGE MANAGEMENT PLAN			

5.3.2 Blast Management

The blasting criteria and proposed airblast and vibration monitoring are detailed in the VCM Blast Management Plan. Results of airblast and vibration monitoring would be used to inform blast design and the nominated blast criteria.

5.3.3 Maintenance

Kurrumbede Complex would be conserved in accordance with the recommendations of the qualified historic heritage specialist. Actioning the recommendations will start occurring prior to the commencement of construction. Maintenance requirements for particular locations and elements would be identified in a yearly cyclical maintenance plan that would include a program of prioritised maintenance works. The cyclical maintenance plan will align with contemporary guidelines for the preparation of maintenance plans such as NSW Heritage Office (2004) and will include the physical inspection of the Complex (including the landscaping), in light of changes to dust and vibration.

5.3.4 Landscaping

The historic landscaping around the Kurrumbede residence, specifically the screen planting, will be maintained. It would be appropriate and desirable to enhance the screen planting, especially to the residence's north and north-east, to further mitigate the visual impacts of the proposed infrastructure.

The nature of new landscaping, and the ongoing maintenance of existing landscaping will be determined in consultation with a landscaper.

Disturbance will be minimised to the naturally occurring vegetation on the flood plain north of the Kurrumbede Homestead Complex, including existing mature eucalyptus trees. These will function to break up views of the Project rail spur and dams.


5.3.5 Rehabilitation

Waste rock emplacements are to be rehabilitated and revegetated to merge with the surrounding landscape to minimise visual impacts.

End-of-mine remediation measures are to include a consideration of the Kurrumbede Homestead Complex and a desirable return to an open rural setting. This would include a program of revegetation (i.e. for the waste rock emplacement and the bunds on the dams).

5.3.6 Accessibility

Kurrumbede Homestead will remain tenanted for as long as the health and safety requirements of an operational mine will allow. If Kurrumbede Homestead were to become untenanted, it could be used for other purposes, such as office accommodation, a venue for meetings or for open days multiple days per year for cultural events. To enable appropriate future uses, potential wear and tear and remedial actions will be identified in the regular maintenance schedule described in section 5.3.3.

	VICKERY COAL MINE	Document Owner:	VCM
		Issue:	1.1
		Last Revision Date:	August 2021
		Date Printed:	20 September 2021
WHC PLN VCM HISTORIC HERITAGE MANAGEMENT PLAN			

5.4 **PROTOCOL FOR THE MANAGEMENT OF PREVIOUSLY UNRECORDED HISTORIC ARCHAEOLOGICAL SITES**

A protocol for the management of previously unrecorded historic archaeological sites Should previously unidentified historic relics or intact archaeological deposits, which are considered to have potential heritage significance, be encountered during construction and initial mining or operational activities the management of such sites will proceed in accordance with the protocol outlined below.

In the event of the discovery of a new archaeological site which has potential heritage significance, the following procedure will be followed:

1. Work will cease in the area of discovery.
2. If the area of discovery is in deposited material, then work will also cease in the area where the material originated.
3. The person discovering the relic will notify their supervisor who will confirm that work has ceased and the area(s) is (area) cordoned off with tape.
4. The supervisor will notify the WHC Environmental Superintendent or authorised delegate.
5. The WHC Environmental Superintendent, or their authorised delegate, will:
 - a. Engage a qualified archaeologist to advise on the nature, extent and archaeological significance.
 - b. Implement management measures in consideration of recommendations from the qualified archaeologist.

Any unexpected archaeological relics or sites would be avoided where possible. If disturbance cannot be avoided, the site would be subject to detailed archaeological investigation undertaken by a qualified archaeologist in accordance with archaeological 'best practice' and the principles contained in the NSW government guideline documents entitled *Historical Archaeology Code of Practice* (Heritage Council of NSW, 2006) and *Assessing Significance of Historical Archaeological Sites and Relics* (NSW Heritage Office, 2009).

5.5 **MANAGEMENT OF HISTORIC HERITAGE SITES DATABASE**

WHC will maintain an internal Historic Heritage Sites Database, which contains the name, site description, significance, GDA coordinates and status of historic heritage sites located at the VCM.

The information within this database will be saved in both tabular and Geographic Information System (GIS) formats and will be made available to all relevant WHC staff and contractors when developing maps/drawings/figures to ensure that any disturbance works consider the location of known historic heritage sites.

Updates to the Historic Heritage Sites Database will be undertaken as required.


The Land Disturbance Permit (LDP) will be reviewed to, and where relevant to consider historic heritage sites at VCM.

	VICKERY COAL MINE	Document Owner:	VCM
		Issue:	1.1
		Last Revision Date:	August 2021
		Date Printed:	20 September 2021
WHC PLN VCM HISTORIC HERITAGE MANAGEMENT PLAN			

6 HERITAGE INDUCTIONS AND TRAINING

All VCM site specific employee and contractor inductions (including those inductions for construction and initial mining personnel) will include a heritage component. This will outline current protocols and responsibilities with respect to management of historic heritage for the VCM. It will also provide an overview of the site types present, relevant legal obligations in relation to historic heritage, responsibility and duty of care of persons in relation to historic heritage, and procedures for reporting the identification of items of historic heritage.

WHC will maintain an accurate record of all employee and contractor inductions in accordance with Condition B73(f)(i), Schedule 2 of SSD-7480.

	VICKERY COAL MINE	Document Owner:	VCM
		Issue:	1.1
		Last Revision Date:	August 2021
		Date Printed:	20 September 2021
WHC PLN VCM HISTORIC HERITAGE MANAGEMENT PLAN			

7 CONTINGENCY PLAN

In the event a heritage management performance measure for the VCM (detailed in Section 4) may not have been met or a performance indicator is considered to have been exceeded, WHC will implement the following Contingency Plan for the VCM:


- The likely exceedance will be reported to the WHC Environmental Superintendent within 24 hours of becoming aware of the exceedance or incident.
- The WHC Environmental Superintendent or authorised delegate will report the likely exceedance to the General Manager as soon as practicable after becoming aware of the likely exceedance for internal review.
- In the event that the incident has caused, or threatens to cause, material harm to the environment, or impacts to historic heritage not approved under SSD-7480, the VCM Environmental Superintendent will report the exceedance of the performance or incident to the Secretary immediately. All other incidents will be reported to Secretary at the earliest opportunity after WHC becomes aware of the incident.
- WHC will apply adaptive management (Section 7.1).
- WHC will identify an appropriate course of action with respect to the identified impact(s) or incident, in consultation with relevant specialists (e.g. suitably qualified archaeologist) and relevant agencies, as necessary. For example, identification of proposed contingency measure(s) and a program to review the effectiveness of the contingency measures. Contingency measures will be developed in consideration of the specific circumstances of the exceedance or incident and the assessment of environmental consequences. WHC will, on request, submit the proposed course of action to Secretary for approval.
- WHC will implement the approved course of action.
- WHC will provide a detailed report on the exceedance of the performance measures to Secretary within seven days of the date of becoming aware of the exceedance.
- WHC will report the exceedance of the performance measure and the success of the approved course of action as a component of the Annual Review (Section 8.1).

7.1 ADAPTIVE MANAGEMENT


In accordance with Condition E3, Schedule 2 of SSD-7480, WHC will assess and manage risks to comply with the criteria and/or performance measures outlined in Schedule 2 of SSD-7480.

Where any exceedance of the criteria and/or performance measures occurs, at the earliest opportunity WHC will:

- take all reasonable and feasible steps to ensure that the non-compliance does not recur;
- consider all reasonable and feasible options for remediation (where relevant) and submit a report to Secretary describing those options and any preferred remediation measures or other courses of action; and

	VICKERY COAL MINE	Document Owner:	VCM
		Issue:	1.1
		Last Revision Date:	August 2021
		Date Printed:	20 September 2021
WHC PLN VCM HISTORIC HERITAGE MANAGEMENT PLAN			

- implement remediation measures as directed by the Secretary, to the satisfaction of the Secretary.

	VICKERY COAL MINE	Document Owner:	VCM
		Issue:	1.1
		Last Revision Date:	August 2021
		Date Printed:	20 September 2021
WHC PLN VCM HISTORIC HERITAGE MANAGEMENT PLAN			

8 REVIEW AND IMPROVEMENT OF ENVIRONMENTAL PERFORMANCE

8.1 ANNUAL REVIEW

In accordance with Condition E9, Schedule 2 of SSD-7480, WHC will review the environmental performance of the VCM for the previous calendar year and report results within the Annual Review to the satisfaction of the Secretary.

8.2 HISTORIC HERITAGE MANAGEMENT PLAN REVISION

In accordance with Condition E5, Schedule 2 of SSD-7480, this HHMP will be reviewed, and if necessary revised (to the satisfaction of the Secretary), within three months of the submission of:

- an Annual Review (Condition E9, Schedule 2);
- an incident report (Condition E7, Schedule 2);
- an Independent Environmental Audit (IEA) (Condition E10, Schedule 2); or
- any modification to the conditions of SSD-7480 (unless the conditions require otherwise).

The reviews would be undertaken to ensure this HHMP is updated on a regular basis and to incorporate potential measures to improve the environmental performance of the VCM.


The revision status of this HHMP is indicated on the final page of each copy. The approved HHMP will be made publicly available on the WHC website, in accordance with Condition E14(a), Schedule 2 of SSD-7480.

8.3 INDEPENDENT ENVIRONMENTAL AUDIT

In accordance with Condition E10, Schedule 2 of the SSD 7480, an IEA of the VCM will be conducted by a suitably qualified, experienced and independent auditor whose appointment has been endorsed by the Secretary.

The IEA will assess the environmental performance of the VCM and review the adequacy of this AHMP. If necessary, appropriate measures or actions to improve the environmental performance of the VCM in regards to management of air quality and greenhouse gas emissions will be recommended.

Within 1 year from the commencement of construction and every 3 years thereafter, WHC shall commission an IEA of the VCM. The IEA and WHC's response to recommendations in the Audit, will be made publicly available on WHC's website as per Condition E14(a), Schedule 2 of SSD 7480.

	VICKERY COAL MINE	Document Owner:	VCM
		Issue:	1.1
		Last Revision Date:	August 2021
		Date Printed:	20 September 2021
WHC PLN VCM HISTORIC HERITAGE MANAGEMENT PLAN			

9 REPORTING PROCEDURES

In accordance with Condition E4(h), Schedule 2 of SSD-7480, WHC has developed a protocol for managing and reporting the following:

- incidents;
- complaints;
- non-compliances with statutory requirements; and
- exceedances of the impact assessment criteria and/or performance criteria.

These protocols are described in the VCM's Environmental Management Strategy (EMS).

In accordance with Condition E14(a), Schedule 2 of SSD-7480, WHC will provide regular reporting on the environmental performance of the VCM on the WHC website.

9.1 INCIDENT REPORTING


An incident is defined as an occurrence or set of circumstances that causes or threatens to cause material harm and which may or may not be or cause a non-compliance. A non-compliance is defined as an occurrence, set of circumstances or development that is a breach of the condition of SSD-7480.

In the event that review of air quality monitoring data indicates an incident has occurred, the incident will be reported in accordance with Condition E7, Schedule 2 of SSD-7480 and relevant conditions of EPL 21283 and MLA 578.

The notification will be provided the Secretary in writing and will identify the VCM (including the development application number and name) and set out the location and nature of the incident.

Within seven days of the date of the incident, WHC will provide the Secretary and any other relevant agencies with a report on the incident. The report will include details required within the approval, including:

- describe the date, time and nature of the exceedance/incident;
- identify the cause (or likely cause) of the exceedance/incident;
- describe what action has been taken to date; and
- describe reasonable and feasible options to address the incident and identify the preferred option to address the incident (Section 9.1).

	VICKERY COAL MINE	Document Owner:	VCM
		Issue:	1.1
		Last Revision Date:	August 2021
		Date Printed:	20 September 2021
WHC PLN VCM HISTORIC HERITAGE MANAGEMENT PLAN			

9.2 **COMPLAINTS**

WHC will maintain a Community Complaints Line and online contact via the WHC website (www.whitehavencoal.com.au) for the sole purpose of receiving community complaints, or enquiries. The Community Complaints Line number will be available on the website. The Community Complaints Line will be staffed 24 hours a day, seven days a week during construction and operations. WHC will respond to callers on the next business day.

Detailed records of each complaint are kept in WHC's record management systems.

In accordance with Condition E14, Schedule 2 of SSD-7480, a complaints register will be made available on the WHC website during the construction and operational stages of the VCM. The complaints register will include:

- the date and time of the complaint;
- the method by which engagement was made;
- any personal details provided or, if no such details were provided, a note to that effect;
- the nature of the complaint; and
- the actions (if any required) taken by WHC in relation to the complaint.

Investigations into complaints will generally commence within 24 hours of receipt, or as soon as practical. The cause of the complaint will be analysed and actions to attempt to address the complaint taken as soon as reasonably possible. In complex cases where resolution will take more than 48 hours, WHC will commit to updating the community member.

9.3 **NON-COMPLIANCE WITH STATUTORY REQUIREMENTS**


A protocol for managing and reporting non-compliances with statutory requirements has been developed as a component of the VCM's EMS and is described below.

Compliance with all approvals, plans and procedures is the responsibility of all personnel (staff and contractors) employed on or in association with WHC and the VCM.


A VCM representative will undertake required inspections, during the construction and initial mining period and initiate directions to address any actions identified, if required, and areas of actual or potential non-compliance.

As described in Section 9.1, WHC will report incidents in accordance with Condition E7, Schedule 2 of SSD-7480 dependent on the incident and potential environmental harm, and in accordance with the protocol for industry notification of pollution incidents under Part 5.7 of the Protection of Environment Operations Act, 1997.

WHC will notify the Secretary and any other relevant agencies immediately after the authorised person becomes aware of the incident which causes or threatens to cause material harm to the environment. Within seven days (or other specified or approved time period) of the date of confirmation of the incident, WHC will provide the Secretary and any other relevant agencies with a report on the incident and any subsequent information that may be requested.

	VICKERY COAL MINE	Document Owner:	VCM
		Issue:	1.1
		Last Revision Date:	August 2021
		Date Printed:	20 September 2021
WHC PLN VCM HISTORIC HERITAGE MANAGEMENT PLAN			

A review of compliance with all conditions in SSD-7480 and all other applicable approvals and licences will be included within each Annual Review (Section 8.1).

	VICKERY COAL MINE	Document Owner:	VCM
		Issue:	1.1
		Last Revision Date:	August 2021
		Date Printed:	20 September 2021
WHC PLN VCM HISTORIC HERITAGE MANAGEMENT PLAN			

10 REFERENCES

Apperly, R., R. Irving and P. Reynolds. (1989) *A Pictorial Guide to Identifying Australian Architecture: Styles and Terms From 1788 to the Present*, Sydney: Angus and Robertson. Extent Heritage Advisors (2018) *Vickery Extension Project Historic Heritage Assessment*. Report prepared for Whitehaven Coal Limited.

Heritage Council of New South Wales (2006) *Historical Archaeology Code of Practice*.

Heritage Management Consultants Pty Ltd (2012) *Vickery Coal Project Non-Aboriginal Heritage Assessment*.

New South Wales Heritage Office (1998) *How to Prepare Archival Records of Heritage Items*.

New South Wales Heritage Office (2001) *Assessing Heritage Significance*. NSW Heritage Office, Sydney.


New South Wales Heritage Office (2004) *Information sheet 1.1 Preparing a maintenance plan*.

New South Wales Heritage Office (2009) *Assessing Significance for Historical Archaeological Sites and 'Relics'*.

New South Wales Heritage Office (2006) *Photographic Recording of Heritage Items using Film or Digital Capture*.


New South Wales Heritage Office and Department of Urban Affairs and Planning (1996) *NSW Heritage Manual*.

Whitehaven Coal Limited (2018) *Vickery Extension Project Environmental Impact Statement*.


	VICKERY COAL MINE	Document Owner:	VCM
		Issue:	1.1
		Last Revision Date:	August 2021
		Date Printed:	20 September 2021
WHC PLN VCM HISTORIC HERITAGE MANAGEMENT PLAN			

Appendix A Historic Heritage Related Conditions Development Consent SSD-7480

VCM Development Consent (SSD-7480)	HHMP Section
Historic Heritage	-
B72. Prior to commencing blasting operations on the site, the Applicant must commission a suitably qualified structural engineer to inspect the condition of the main residence at the Kurrumbede Homestead Complex and outbuildings to confirm measures to minimise damage due to blasting, advise appropriate blasting criteria and recommend works to protect the structural integrity of the homestead.	Sections 5.3.1 and 5.3.2
B73. The Applicant must prepare a Historic Heritage Management Plan for the development, in respect of all non-Aboriginal cultural heritage items, to the satisfaction of the Planning Secretary. This plan must:	This HHMP
(a) be prepared by a suitably qualified and experienced person/s;	Section 1.1
(b) be prepared in consultation with the Heritage Branch, GSC and the Dorothea Mackellar Memorial Society and in accordance with the relevant Heritage Branch guidelines;	Section 1.2
(c) describe how historic heritage values of the site would be recorded and preserved;	Section 3
(d) identify all heritage items in the vicinity of the site and include a statement of significance for each item;	Section 3.1
(e) for the Kurrumbede Homestead Complex, describe the measures to:	Section 5.3
(i) manage appropriate future uses, including appropriate physical intervention in the heritage structures to facilitate those uses and potential wear and tear as a result of the use;	
(ii) maintain and enhance historic landscaping around the Kurrumbede residence (especially screen planting) and manage any new landscaping;	
(iii) verify the condition of the Kurrumbede residence and outbuildings prior to commencing construction;	
(iv) monitor the physical condition of the Kurrumbede residence and outbuildings in response to dust and vibrations impacts due to the development;	
(v) ensure that the Kurrumbede residence and outbuildings are made safe and weatherproof to prevent deterioration beyond normal wear and tear;	
(vi) ensure that an appropriate use of the Kurrumbede Homestead Complex (including the residence) is maintained throughout the life of the development, including consideration of its use for cultural events and facilitating controlled public access;	
(vii) minimise disturbance to the naturally occurring vegetation on the flood plain to the north of the Kurrumbede Homestead Complex, including the existing mature eucalyptus trees and historic screen plantings; and	
(viii) ensure the end-of-mine remediation measures include a consideration for the Kurrumbede Homestead Complex to return to an open rural setting, including revegetation of waste rock emplacements and dam bunds; and	
(f) describe the measures to be implemented on the site or within any offset areas to:	-
(i) ensure all workers on the site receive suitable heritage inductions prior to carrying out any activities which may cause impacts to historic heritage, and that suitable records are kept of these inductions;	Sections 5 and 6
(ii) protect heritage items located outside the approved disturbance area from impacts of the development, beyond those predicted in the document/s listed in condition A2(c);	Sections 3.1 and 4
(iii) undertake photographic/archival recording of the Weatherboard Home (Site 22), prior to disturbance; and	Section 5.1
(iv) manage any new heritage items discovered during the life of the development;	Section 5.4


	VICKERY COAL MINE	Document Owner:	VCM
		Issue:	1.1
		Last Revision Date:	August 2021
		Date Printed:	20 September 2021
WHC PLN VCM HISTORIC HERITAGE MANAGEMENT PLAN			

VCM Development Consent (SSD-7480)	HHMP Section
B74. The Applicant must not commence construction until the Historic Heritage Management Plan is approved by the Planning Secretary.	-
B75. The Applicant must implement the Historic Heritage Management Plan as approved by the Planning Secretary.	-
Management Plan Requirements	-
E4. Management plans required under this consent must be prepared in accordance with relevant guidelines, and include where relevant:	-
(a) summary of relevant background or baseline data;	Section 3
(b) details of:	-
(i) the relevant statutory requirements (including any relevant approval, licence or lease conditions);	Section 2
(ii) any relevant limits or performance measures and criteria; and	Section 4
(iii) the specific performance indicators that are proposed to be used to judge the performance of, or guide the implementation of, the development or any management measures;	Section 4
(c) any relevant commitments or recommendations identified in the document/s listed in condition A2(c);	Sections 4 and 5
(d) a description of the measures to be implemented to comply with the relevant statutory requirements, limits, or performance measures and criteria;	Section 5
(e) a program to monitor and report on the:	-
(i) impacts and environmental performance of the development; and	Sections 5.2 and 5.3.2
(ii) effectiveness of the management measures set out pursuant to paragraph (d);	
(f) a contingency plan to manage any unpredicted impacts and their consequences and to ensure that ongoing impacts reduce to levels below relevant impact assessment criteria as quickly as possible;	Section 7
(g) a program to investigate and implement ways to improve the environmental performance of the development over time;	Section 8
(h) a protocol for managing and reporting any:	-
(i) incident, non-compliance or exceedance of any impact assessment criterion or performance measure;	Section 9.1
(ii) complaint; or	Section 9.2
(iii) failure to comply with other statutory requirements;	Section 9.3
(i) public sources of information and data to assist stakeholders in understanding environmental impacts of the development; and	Section 8
(j) a protocol for periodic review of the plan.	Section 8.2

	VICKERY COAL MINE	Document Owner:	VCM
		Issue:	1.1
		Last Revision Date:	August 2021
		Date Printed:	20 September 2021
WHC PLN VCM HISTORIC HERITAGE MANAGEMENT PLAN			

Appendix B Consultation Log

Date	Consultee	Comment
27/10/20	Heritage NSW	Detail added on physical description, future uses, rehabilitation, landscaping, monitoring and maintenance,
26/10/20	GSC	No comment.
26/10/20	DMMS	Inclusion of Gunnedah Rural Museum, detail on actioning recommendations, future uses, administrative items.
May 2021	GSC	No comment

	VICKERY COAL MINE	Document Owner:	VCM
		Issue:	1.1
		Last Revision Date:	August 2021
		Date Printed:	20 September 2021
WHC PLN VCM HISTORIC HERITAGE MANAGEMENT PLAN			

Document History

Edition	Rev.	Comments	Date
1	0	Initial draft following consultation as first submitted	29/01/21
1.1	1	Revision incorporating DPIE feedback	August 2021